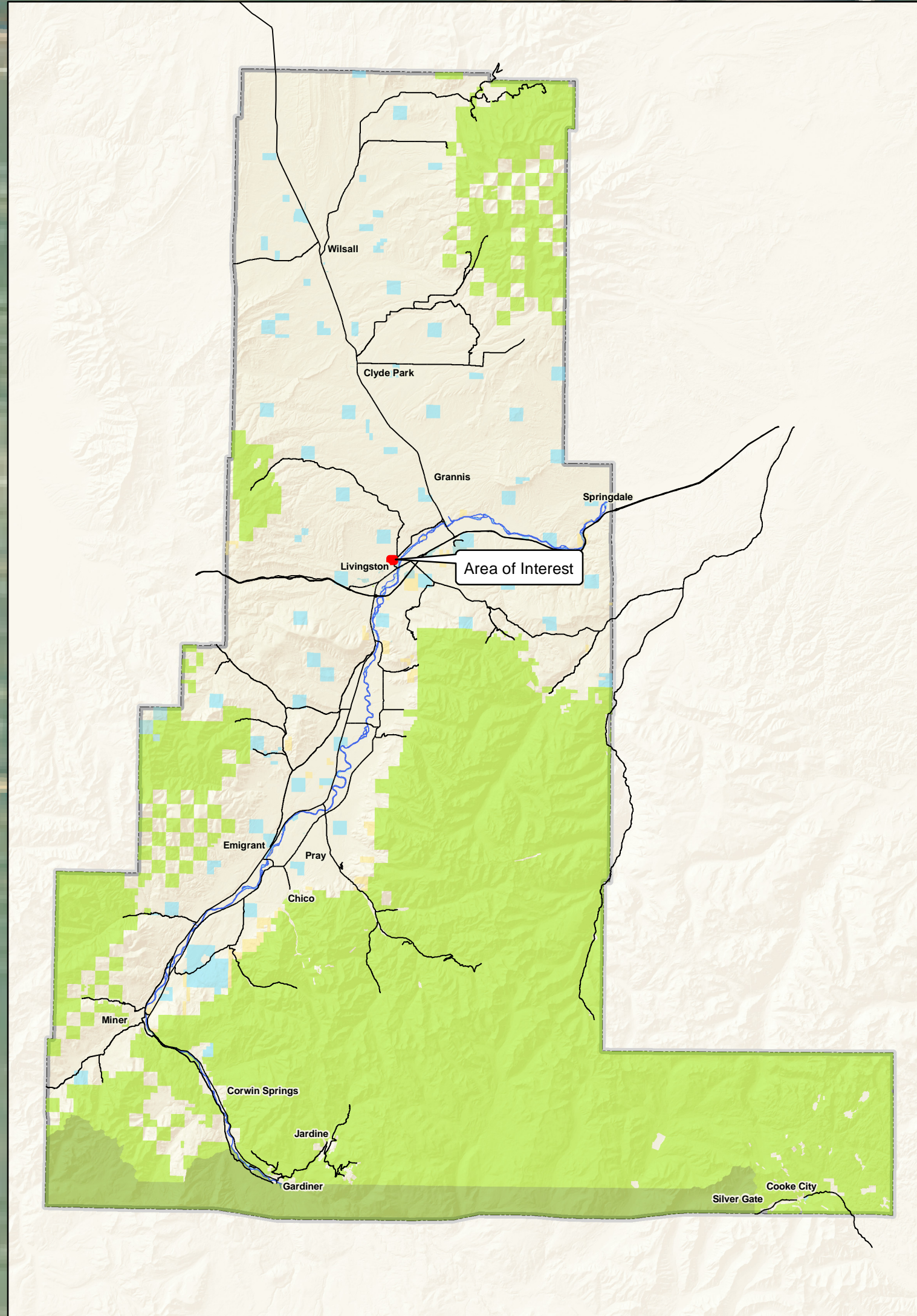





Legal Description:
GREEN ACRES SUBD,
S07,
T02 S,
R10 E,
PARK,
PLAT 12

Calculated Acreage: 2.942293

Coordinates: 45.68N,
-110.55E




Green Acres Park Livingston, Montana



PARK COUNTY
MONTANA

This map is for informational purposes only and not for legal, engineering, or surveying purposes. Park County assumes no legal responsibility for this information and shall not be liable for any claims or damages arising out of the use of this information. Date: 3/16/18 Author: SIAV



0 35 70 140 210 280 Feet